

# GREENSPOT

# KIDS

## COLUMBUS GREEN WALKS SCHOOL TOUR & ACTIVITIES



THE CITY OF  
**COLUMBUS**  
MICHAEL B. COLEMAN, MAYOR

[www.GreenKids.Columbus.gov](http://www.GreenKids.Columbus.gov)

# ABOUT GREENSPOT KIDS & COLUMBUS GREEN WALKS

---

GreenSpot Kids was developed by the Mayor's Office of Environmental Stewardship with support from the Ohio Environmental Education Fund. The resources available through the program are free to teachers and were designed to be easily mixed and matched in a way that best suits the unique needs of each class.

The Green Walks component of the GreenSpot Kids program was created in partnership with the Columbus Public Health's Healthy Places Program. The school tour activity is designed to give students an enriching experience supportive of science curriculum that can be easily enjoyed on school grounds. Parents with children of all ages are invited to use this resource as well. Many of these same lessons and activities are great for families to do together. Simply follow the instructions below to get started.

GreenSpot Kids is an approved partner of Columbus City Schools.

For more resources from GreenSpot Kids visit [www.GreenKids.Columbus.gov](http://www.GreenKids.Columbus.gov)

## SCHOOL TOUR INSTRUCTIONS

---

### Note to Teachers:

This school tour is a great activity for gym teachers and regular classroom teachers. The school tour and activity sheets that follow are appropriate for grades 1 and up. The school tour is best done in small groups with the help of an adult guide.

### Step 1:

Read the clue to the students. Clues will direct you to each of 7 common school features. (You may want to take the walk on your own first to ensure you know where you will be taking students.) If your school does not have one of the listed features, simply skip that feature and move onto the next one.

### Step 2:

Let students shout answers to the clue then walk, run or skip to that location.

### Step 3:

Using a speaker phone, call 614-645-8110 and enter the extension listed under each subheading. You will hear a description of each feature explaining how it impacts the environment. (For your convenience, the audio script also has been provided in case you prefer to read it aloud to the group.)

### Step 4:

After listening to the audio, simply hang up. (You will call again at each of the seven features.)

### Step 5:

Further engage students with the suggested follow-up question or activity.

## CLUE 1: FIND THE PLACE YOU CATCH A RIDE HOME.

---

### ANSWER:

Bus stop/Carpool lane and/or Bike rack

### CALL EXTENSION NUMBER:

120

### AUDIO SCRIPT:

A main source of air pollution is from cars. If we share a ride with our friends, take the bus, walk or ride a bike, we can help keep the air clean. Making these changes also saves energy used to power cars.



### FOLLOW UP ACTIVITY:

Other than school, where do you go that you could start taking the bus, riding your bike, sharing a ride with a friend or walking instead of riding in a car? (Ideally, students will brainstorm places like sports practice, library, the park, grocery store, etc.)

## CLUE 2: FIND THE ROOM THAT HOLDS THOUSANDS OF BOOKS.

---

### ANSWER:

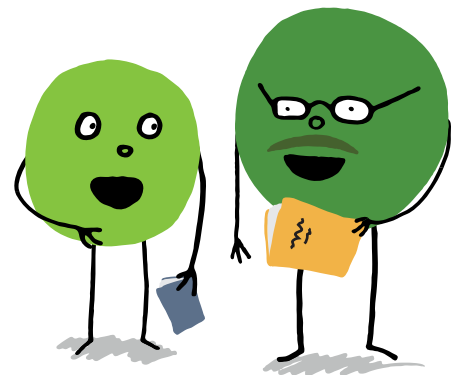
Library

### CALL EXTENSION NUMBER:

121

### AUDIO SCRIPT:

Did you know that libraries are some of the best recyclers? Libraries allow people from all around the community to share books, movies and music instead of having to buy their own copies. There are 22 public libraries in Columbus and each one collects books that will be interesting to the people who live nearby. All of the library branches combined have nearly three million books for you to enjoy. Now, that's a lot of reading!



### FOLLOW UP ACTIVITY:

What is your favorite book in the school library? Guess how many times students have read it at your school? How many books would that save from being printed?

### CLUE 3: LOOK UP TO SPOT AN ELECTRIC HIGHWAY.

---

#### ANSWER:

Power lines

#### CALL EXTENSION NUMBER:

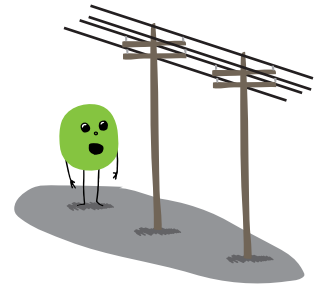
122

#### AUDIO SCRIPT:

In Ohio, electricity is mainly generated by burning coal at power plants. The electricity then travels far, through power lines that lead to every building in the area. When you flip on a light switch in your house, power flows through those lines, to your house, and to the wires connected to the switch and the light bulb. Generating electricity can be hard on the environment because it uses up natural resources like coal and it pollutes the air. Luckily though, you can save energy and help the earth easily by turning on lights only when you are using them.

#### FOLLOW UP ACTIVITY:

Coal is only one way power is made. Can you name another one that is better for the earth? (Ideally, students will list solar and wind power.)



### CLUE 4: IT'S ALL AROUND YOU... JUST LOOK UP.

---

#### ANSWER:

Atmosphere

#### CALL EXTENSION NUMBER:

123

#### AUDIO SCRIPT:

What do you see when you look up? Can you tell by looking at the sky if the air is clean? Not usually. But clean air is important to everything that lives in our world. There are many things we can do every day to prevent pollution and help keep our air clean. We can turn off lights when we're not using them or we can walk or ride our bike instead of going in the car. Planting a tree also can help clean the air. Each small thing we do adds up and together, we can make a difference!

#### FOLLOW UP ACTIVITY:

Look up in the sky. If there are clouds, what do they look like?



## CLUE 5: FIND THE PLACE WHERE THE RAIN DISAPPEARS UNDERGROUND.

---

### ANSWER:

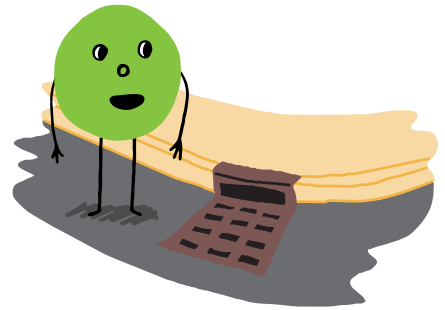
Storm drain

### CALL EXTENSION NUMBER:

124

### AUDIO SCRIPT:

When rain falls onto the ground, it goes down the storm drain. Under the ground, pipes then take the rain water somewhere else, usually to the nearest river. But before rain runs into a storm drain, it flows over roof tops, roads and parking lots. As the water runs over these surfaces, it picks up pollution like oil and litter. We can prevent pollution from getting into the nearest river by putting our trash into the trash can or recycling bin.



### FOLLOW UP ACTIVITY:

Do you know the name of the stream closest to your school or house? If not, you can find it on a map. All the streams in Columbus eventually connect to the Scioto River. The Scioto River then connects to the Ohio River and then into the Mississippi River where it finally is released into the Gulf of Mexico. Now, that's a long way to travel!

## CLUE 6: FIND THE BIG GREEN BOX WHERE PAPER, PLASTIC AND METAL ARE COLLECTED FOR A NEW PURPOSE.

---

### ANSWER:

Recycling dumpster

### CALL EXTENSION NUMBER:

125

### AUDIO SCRIPT:

Recycling conserves our natural resources like trees, rocks and oil. When we recycle items like paper, plastic and metal, they are taken to a facility to be sorted and sold to companies that make brand new products from them.

### FOLLOW UP ACTIVITY:

[www.RecycleColumbus.org](http://www.RecycleColumbus.org) is the place where you can learn all about how to recycle at home. Big blue recycling carts are being distributed to eligible households starting in spring of 2012 to make recycling easier for you at home. What items will you put in the blue recycling bin?



## CLUE 7: FIND THE PLACE WHERE YOUR SCHOOL PROUDLY DISPLAYS ITS GREEN ACHIEVEMENTS.

---

### ANSWER:

GreenSpot membership window decal ([www.ColumbusGreenSpot.org](http://www.ColumbusGreenSpot.org))

### CALL EXTENSION NUMBER:

126

### AUDIO SCRIPT:

There are more than 3,500 GreenSpot locations throughout Columbus, including homes, businesses, schools and other organizations. All GreenSpot members make a pledge to care for the environment.

### FOLLOW UP ACTIVITY:

What is your favorite way to care for the environment?



## THANKS FOR TAKING A GREEN WALK TOUR!

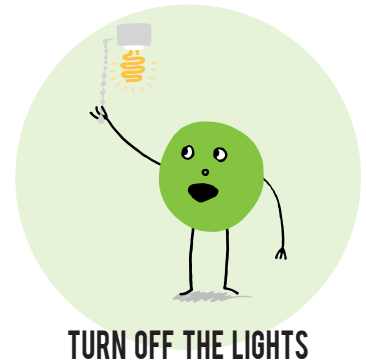
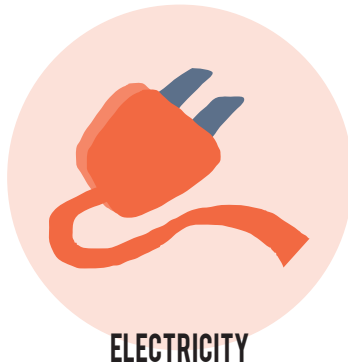
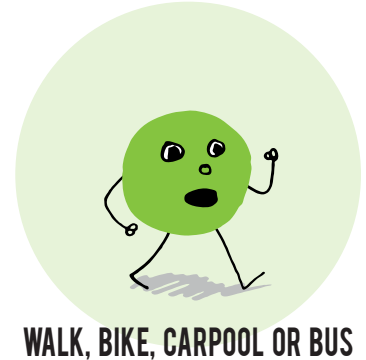
---

We hope you enjoyed the Green Walk tour of your school site. If your students would like to take another tour, the Columbus Green Walk map and audio tour of Whetstone Park, as well as many other walks featuring Columbus art, are also available online at [www.GreenKids.Columbus.gov](http://www.GreenKids.Columbus.gov)

# GREENSPOT WORKSHEET

NAME: \_\_\_\_\_

The things we do everyday cause changes in the environment which can impact the health of people, plants and animals. Draw a line connecting each natural resource to the way it is used and again to a simple way to help the earth.





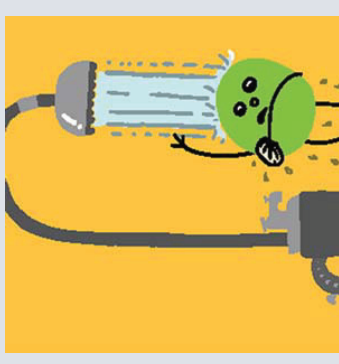
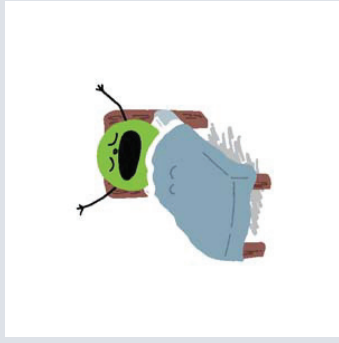
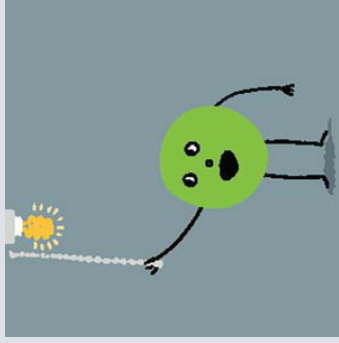
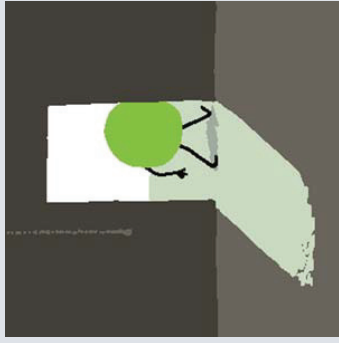
# GREENSPOT: CREATE YOUR OWN STORY

NAME: \_\_\_\_\_

Use the pictures below to tell your own story of what GreenSpot could do to help make your neighborhood green.

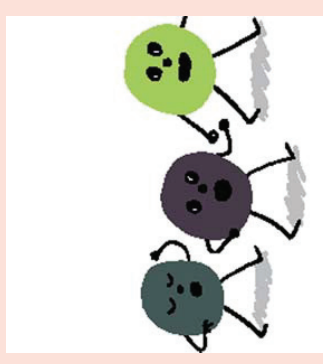
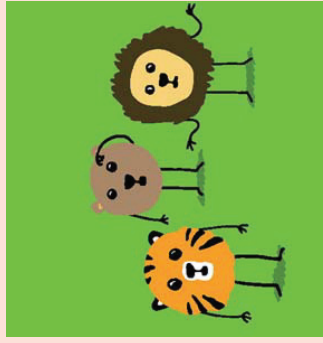
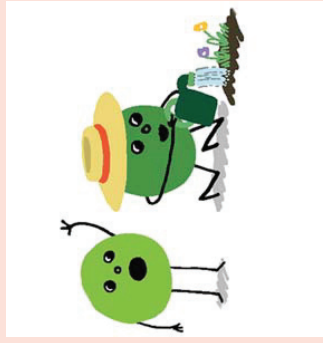
1

Use one of these pictures to begin your story



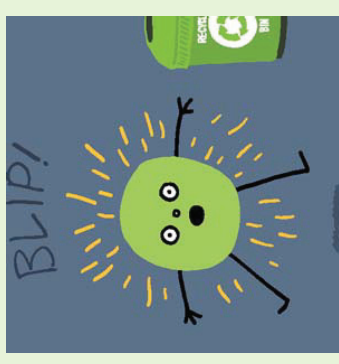
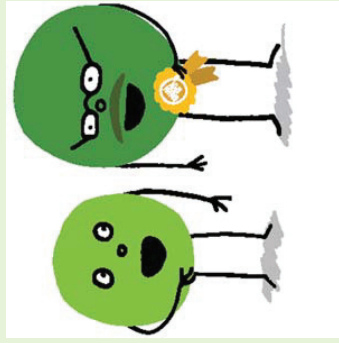
2

Use one of these pictures to continue your story



3

Use one of these pictures to end your story





NAME: \_\_\_\_\_

## GREENSPOT: MAKE A WALKING MAP FOR YOUR SCHOOL!

Walking or riding the bus to school is one thing that keeps Green Spot, green. Use the space below to draw routes where you could walk to places around your school. Try to draw routes to as many of the things on this list below as you can! Try to pick routes to walk where you feel safe, where there are crosswalks, and where there are sidewalks. If you can't find a route where you feel safe, draw how you would like the street to look so that it is safe for walking.

<b>PARK</b>	<b>FRIENDS' HOUSES</b>	<b>BUSSTOP</b>	<b>ATMOSPHERE</b>
<b>GROCERY STORE</b>	<b>PLACES TO EAT</b>	<b>CARPPOOL LANE</b>	<b>STORM DRAIN</b>
<b>LIBRARY</b>	<b>PLACES TO SHOP</b>	<b>BIKE RACK</b>	<b>RECYCLING DUMPSTER</b>
<b>YOUR HOUSE</b>	<b>PLACES YOU LIKE</b>	<b>POWER LINES</b>	<b>GREENSPOT MEMBERSHIP DECAL</b>

